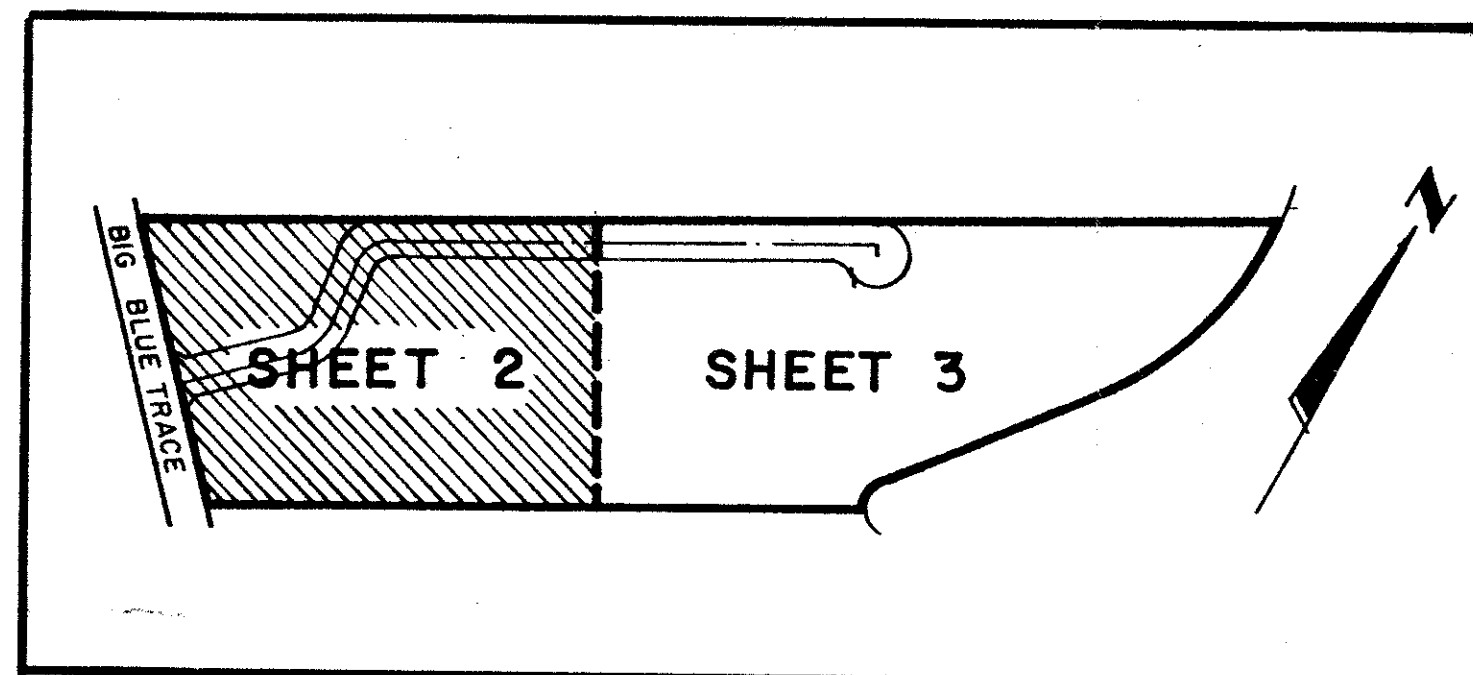
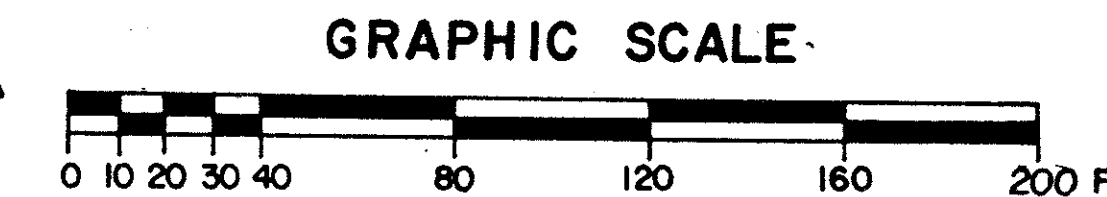
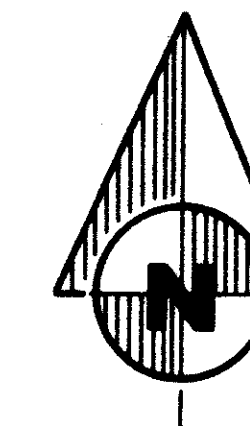


THE SHORES AT WELLINGTON - P.U.D.

IN PART OF SECTION 10, TWP. 44 S., RGE. 41 E.
 PALM BEACH COUNTY, FLORIDA
 IN 3 SHEETS SHEET NO. 2
 JUNE, 1981

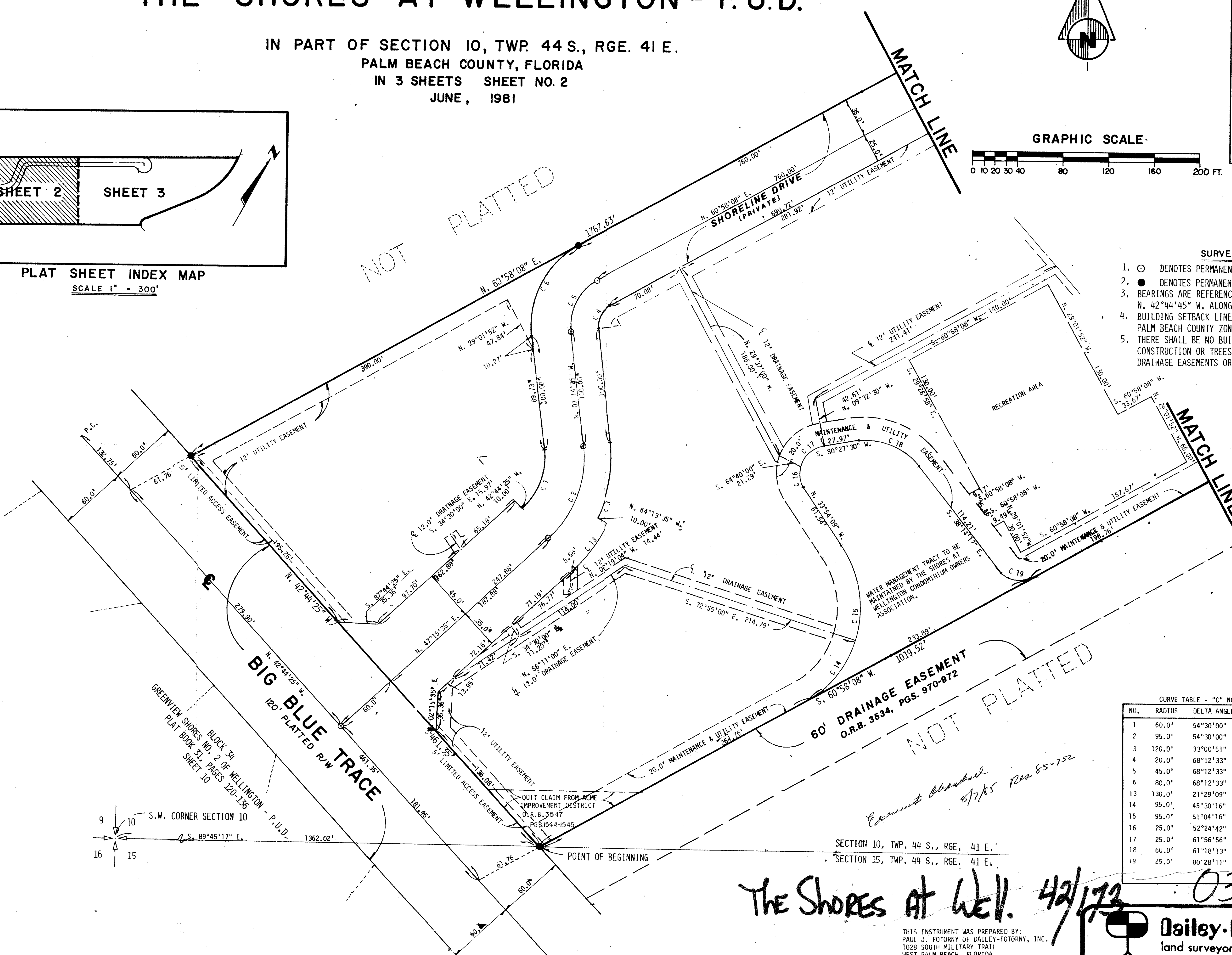
173



PLAT SHEET INDEX MAP
 SCALE 1" = 300'

NOT PLATTED

- SURVEYOR'S NOTES**
- DENOTES PERMANENT CONTROL POINTS
 - DENOTES PERMANENT REFERENCE MONUMENTS
 - BEARINGS ARE REFERENCED TO AN ASSUMED BEARING OF N. 42°44'45" W. ALONG THE CENTERLINE OF BIG BLUE TRACE
 - BUILDING SETBACK LINES SHALL BE AS REQUIRED BY PALM BEACH COUNTY ZONING REGULATIONS
 - THERE SHALL BE NO BUILDINGS OR ANY KIND OF CONSTRUCTION OR TREES OR SHRUBS PLACED ON DRAINAGE EASEMENTS OR UTILITY EASEMENTS

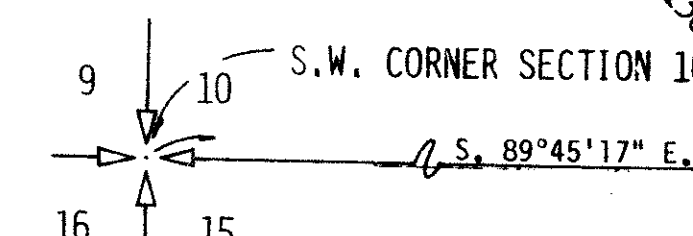


NOT PLATTED

CURVE TABLE - "C" NO.'S

NO.	RADIUS	DELTA ANGLE	ARC DISTANCE
1	60.0'	54°30'00"	57.07'
2	95.0'	54°30'00"	90.36'
3	120.0'	33°00'51"	69.14'
4	20.0'	68°12'33"	23.81'
5	45.0'	68°12'33"	53.57'
6	80.0'	68°12'33"	95.24'
13	130.0'	21°29'09"	48.75'
14	95.0'	45°30'16"	75.45'
15	95.0'	51°04'16"	84.68'
16	25.0'	52°24'42"	22.87'
17	25.0'	61°56'56"	27.03'
18	60.0'	61°18'13"	64.20'
19	25.0'	80°28'11"	35.11'

Comments attached 5/7/85 Rea 85-752



SECTION 10, TWP. 44 S., RGE. 41 E.
 SECTION 15, TWP. 44 S., RGE. 41 E.

The Shores At Well. 42/173

0332-059

THIS INSTRUMENT WAS PREPARED BY:
 PAUL J. FOTORNY OF DAILEY-FOTORNY, INC.
 1028 SOUTH MILITARY TRAIL
 WEST PALM BEACH, FLORIDA

Dailey-Fotorny, inc.
 land surveyors, planners, engineers

42/173